

A **E**sto mihi in dñm.
R **G** **T** es de us qui fa cis mirabi
lia solus no tam fecisti in
gen tibus vir tu
tem tu am.



OMING Introitu

F

ne lon ge, faci as auxi li

f

tu m tuum a me ad e fen sione

c

mea as spice libe ra me deo re le

f

o nul et a cor tu bus un cor nuo rum

c

hu multa tem me am **PS** deus deus

meus respice **V** Libe ra me **G** e nu si ma

f

num dex te re mee in uo lun ta te

f

tu a de dux i sti me et cum glo ria

f

asump si sti me

V Quam bo nus i sta bel de us i re tis

c

cor de mei au tem pe ne mo tu sunt pe

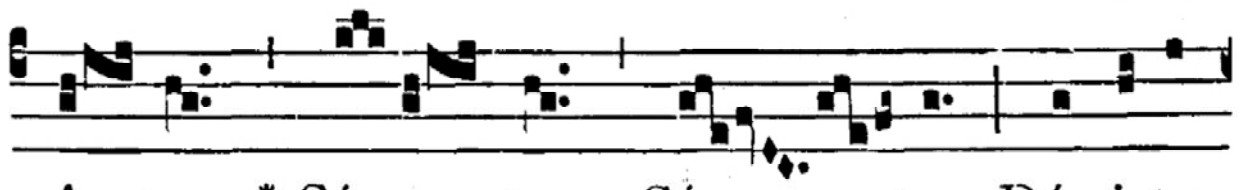
f

der pe ne effu si sunt gressu mei

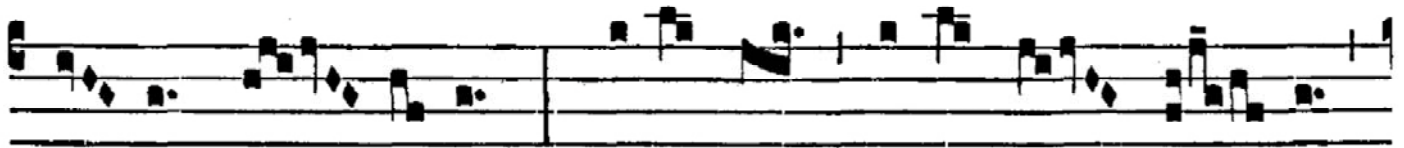
neumi diastematici

8.

S



Anctus, * Sán- ctus, Sán- ctus Dóminus



Dé- us Sá- ba- oth. Plé-ni sunt caéli et tér- ra

G Clef:

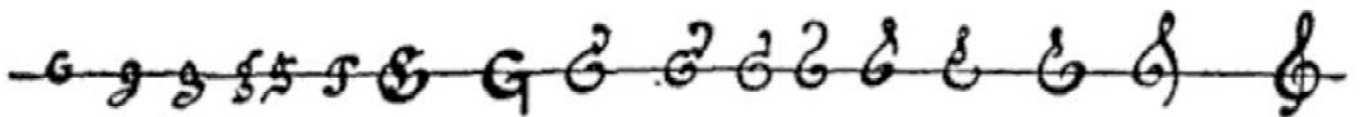


PLATE XIV. EVOLUTION OF THE CLEF-SIGNS

sviluppo chiave di sol

F

F

F

F

F

sviluppo chiave di fa

Bach



Haydn



Mozart



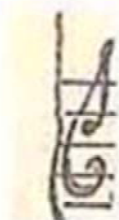
Beethoven



Schubert



Mendelssohn Schumann Brahms



Debussy Ravel



grafie della chiave di sol